

Rhesus macaque CD155/PVR Protein

Cat. No. CD1-CM355

Description

Source	Recombinant Rhesus macaque CD155/PVR Protein is expressed from HEK293 with His tag at the C-Terminus. It contains Asp28-Asn343.
Accession	Q0MSE6-1
Molecular Weight	The protein has a predicted MW of 35.5 kDa. Due to glycosylation, the protein migrates to 46-60 kDa based on Bis-Tris PAGE result.
Endotoxin	Less than 1EU per μg by the LAL method.
Purity	> 95% as determined by Bis-Tris PAGE > 95% as determined by HPLC

Formulation and Storage

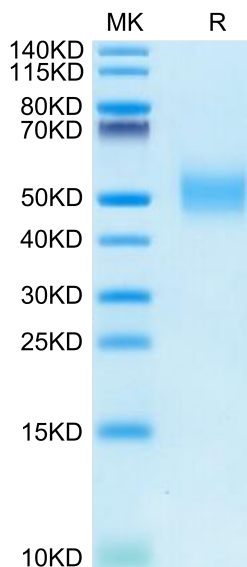
Formulation	Lyophilized from 0.22 μm filtered solution in PBS (pH 7.4). Normally 8% trehalose is added as protectant before lyophilization.
Reconstitution	Centrifuge the tube before opening. Reconstituting to a concentration more than 100 $\mu\text{g}/\text{ml}$ is recommended. Dissolve the lyophilized protein in distilled water.
Storage	-20 to -80°C for 12 months as supplied from date of receipt. -80°C for 3 months after reconstitution. Recommend to aliquot the protein into smaller quantities for optimal storage. Please minimize freeze-thaw cycles.

Background

CD155 is a cell surface adhesion molecule functioning in tumor cell migration, invasion, and metastasis, and not surprisingly, is also designated as a common tumor-associated antigen. CD155 is also recognized by NK cells to induce their cytotoxicity. CD155 is also commonly referred to as the "poliovirus receptor," or PVR.

Assay Data

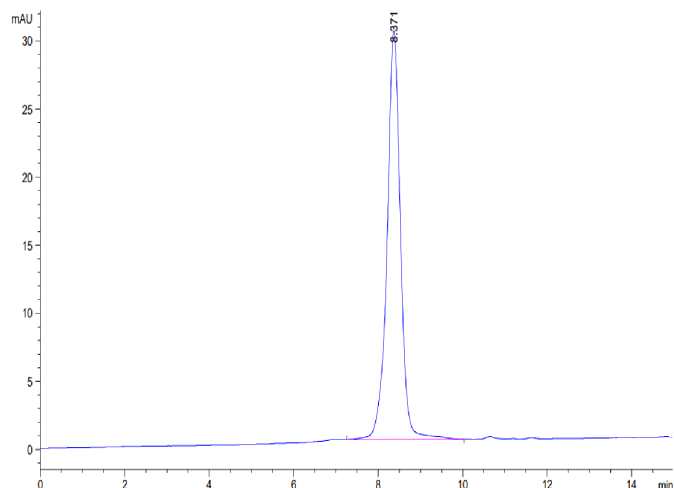
Bis-Tris PAGE



Rhesus macaque CD155/PVR on Bis-Tris PAGE under reduced condition. The purity is greater than 95%.

SEC-HPLC

Assay Data

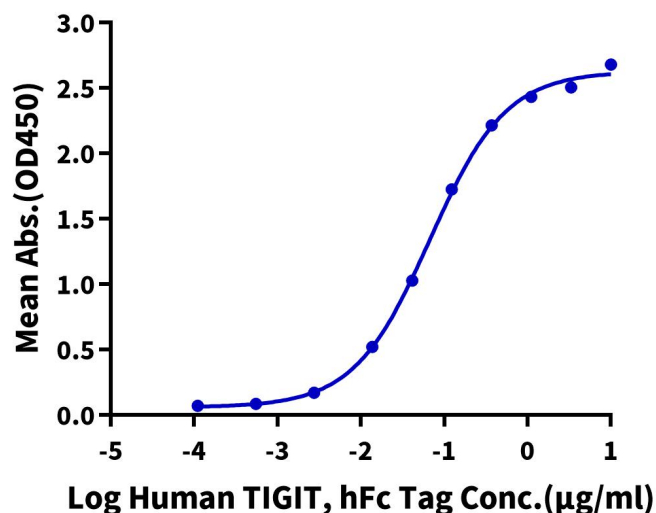


The purity of Rhesus macaque CD155/PVR is greater than 95% as determined by SEC-HPLC.

ELISA Data

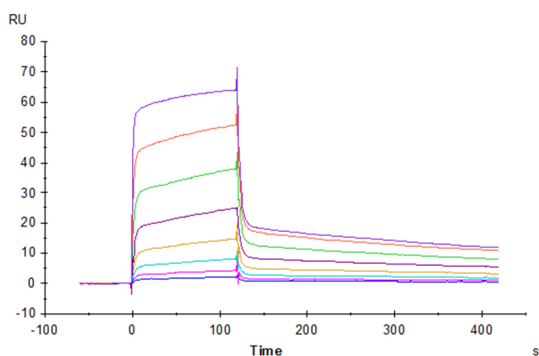
Rhesus macaque CD155, His Tag ELISA

0.2 μg Rhesus macaque CD155, His Tag Per Well



Immobilized Rhesus macaque CD155, His Tag at 2 μg/ml (100 μl/well) on the plate. Dose response curve for Human TIGIT, hFc Tag with the EC50 of 67.6 ng/ml determined by ELISA (QC Test).

SPR Data



Human DNAM-1, hFc Tag captured on CM5 Chip via Protein A can bind Rhesus macaque CD155, His Tag with an affinity constant of 0.234 μM as determined in SPR assay (Biacore T200).